



engaging
enabling
empowering



Primrose Road



Waltham Forest, E10

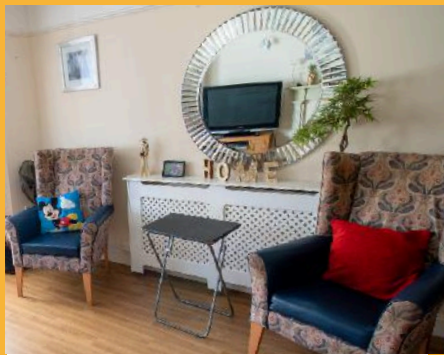
A residential care home providing support to six adults with learning disabilities. The support is individual, flexible and tailored to meet the needs of the individual.

- 24-hour support
- Communal garden, kitchen, laundry room, bathrooms and 2 homey sitting rooms
- Lift and stairlift
- Lots of on-site activities
- Near shops, restaurants and leisure facilities

Transport links include:

 Leyton Midland Road (9 minutes )

 69, 97, N26, W16 (9 minutes )





Why choose Outward

For 50 years, Outward has been empowering people with learning disabilities, autistic adults, young people, and older people to live their lives to the fullest.

Our staff are trained to enable the people they support to maximise their independence and be active members of the local community.

Engaging Community programming

Our dedicated Community Engagement team works with the people we support and well-being experts to co-produce impactful programming for the Outward community.

This year, the people we support have enjoyed:

- Friendships Programmes
- Healthy Cooking Classes
- Sports Programmes
- Community Socials and Awards Nights

The Next Steps

If you'd like to find out more or speak with a member of our team, contact us at:



info@outward.org.uk



0208 980 7101



www.outward.org.uk

For all safeguarding related enquiries, please contact Desislava Nikolova by email on DNikolova@outward.org.uk or by phone on 07872502093

© 2025 Outward

Outward Housing trading as Outward is a Company Limited by Guarantee

Registration number: 2151434

Registered charity number: 800529

VAT registration number: 778-5326-83

Registered Office: Newlon House, 4 Daneland Walk, Hale Village, London, N17 9FE

