



- engaging
- enabling
- empowering

Hotel in The Park


Tower Hamlets, E2

A CQC Registered residential home providing a **respite service** for adults with learning disabilities and/or autistic people within Tower Hamlets.


- 24-hour staffing
- 7 en-suite bedrooms (2 wheelchair accessible)
- Garden with view of Regents Canal and Victoria Park
- Bespoke meals and activities

Transport links include:




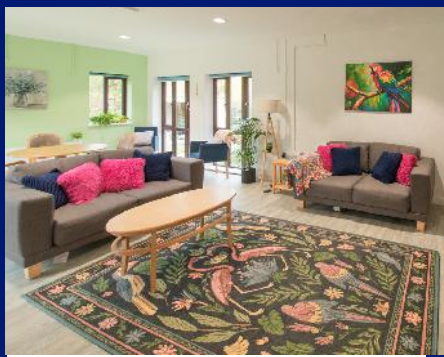
Cambridge Heath (8 minutes )



309, D3 (3 minutes )



106, 254, 388, D6, N253 (8 minutes )





Why choose Outward

For 50 years, Outward has been empowering people with learning disabilities, autistic adults, young people, and older people to live their lives to the fullest.

Our staff are trained to enable the people they support to maximise their independence and be active members of the local community.

Engaging Community programming

Our dedicated Community Engagement team works with the people we support and well-being experts to co-produce impactful programming for the Outward community.

This year, the people we support have enjoyed:

- Friendships Programmes
- Healthy Cooking Classes
- Sports Programmes
- Community Socials and Awards Nights

The Next Steps

Referrals for Hotel in the Park come via Tower Hamlets Community Learning Disability Service (CLDS) and you can contact them by phone on:

- **0207 771 5500** (Main Office)
- **0207 771 5533** (Direct)

If you would like to learn more, please contact us by email on

ReferralsHITP@outward.org.uk, or by phone on 020 8637 2410 & 079 1273 4020.

For all safeguarding related enquiries, please contact Desislava Nikolova by email on

DNikolova@outward.org.uk or by phone on 07872502093

© 2025 Outward

Outward Housing trading as Outward is a Company Limited by Guarantee
Registration number: 2151434

Registered charity number: 800529

VAT registration number: 778-5326-83

Registered Office: Newlon House, 4 Daneland Walk, Hale Village, London, N17 9FE

