



outward
part of the Newlon Group

engaging
enabling
empowering

Desmond Court


Enfield, EN1

Desmond Court has 14 one-bedroom self contained flats with communal spaces, for older people with learning disabilities.


- 14 one-bedroomed flats
- Communal lounges, kitchen and garden
- Wheelchair accessible
- A range of in-home activities
- Local amenities include shops, restaurants and leisure centres

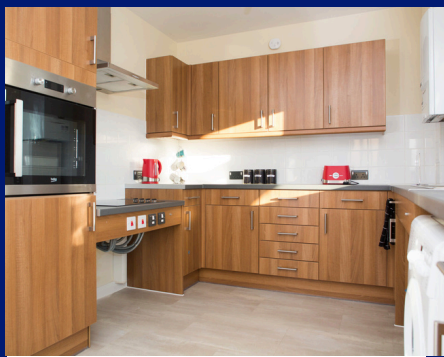
Transport links include:



191 (5 minutes )



217, 317, 617, 629 (10 minutes )





Why choose Outward

For 50 years, Outward has been empowering people with learning disabilities, autistic adults, young people, and older people to live their lives to the fullest.

Our staff are trained to enable the people they support to maximise their independence and be active members of the local community.

Engaging Community programming

Our dedicated Community Engagement team works with the people we support and well-being experts to co-produce impactful programming for the Outward community.

This year, the people we support have enjoyed:

- Friendships Programmes
- Healthy Cooking Classes
- Sports Programmes
- Community Socials and Awards Nights

The Next Steps

If you'd like to find out more or speak with a member of our team, contact us at:



info@outward.org.uk



0208 980 7101



www.outward.org.uk

For all safeguarding related enquiries, please contact Desislava Nikolova by email on DNikolova@outward.org.uk or by phone on 07872502093

© 2025 Outward

Outward Housing trading as Outward is a Company Limited by Guarantee

Registration number: 2151434

Registered charity number: 800529

VAT registration number: 778-5326-83

Registered Office: Newlon House, 4 Daneland Walk, Hale Village, London, N17 9FE

