



outward
part of the Newlon Group

- engaging
- enabling
- empowering

Church View


Waltham Forest, E7

An accessible six-bedroom property offering supported living for adults with learning disabilities and providing tailored support to empower independence.


- In the heart of Waltham Village, near local shops, cafes and museum
- 24-hour staffing
- 6 bedrooms (3 with en-suite bathrooms)
- 2 shared lounges
- Large enclosed rear garden

Transport links include:




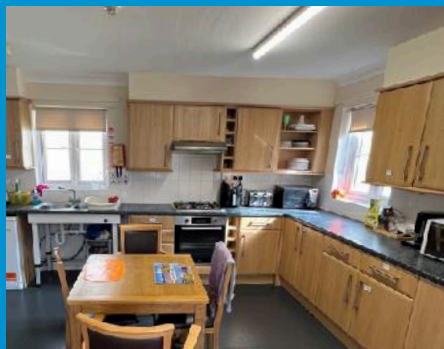
Wood Street (9 minutes )



Walthamstow Central (9 minutes )



W212, W16 (9 minutes )





Why choose Outward

For 50 years, Outward has been empowering people with learning disabilities, autistic adults, young people, and older people to live their lives to the fullest.

Our staff are trained to enable the people they support to maximise their independence and be active members of the local community.

Engaging Community programming

Our dedicated Community Engagement team works with the people we support and well-being experts to co-produce impactful programming for the Outward community.

This year, the people we support have enjoyed:

- Friendships Programmes
- Healthy Cooking Classes
- Sports Programmes
- Community Socials and Awards Nights

The Next Steps

If you'd like to find out more or speak with a member of our team, contact us at:



info@outward.org.uk



0208 980 7101



www.outward.org.uk

For all safeguarding related enquiries, please contact Desislava Nikolova by email on DNikolova@outward.org.uk or by phone on 07872502093

© 2025 Outward

Outward Housing trading as Outward is a Company Limited by Guarantee

Registration number: 2151434

Registered charity number: 800529

VAT registration number: 778-5326-83

Registered Office: Newlon House, 4 Daneland Walk, Hale Village, London, N17 9FE

